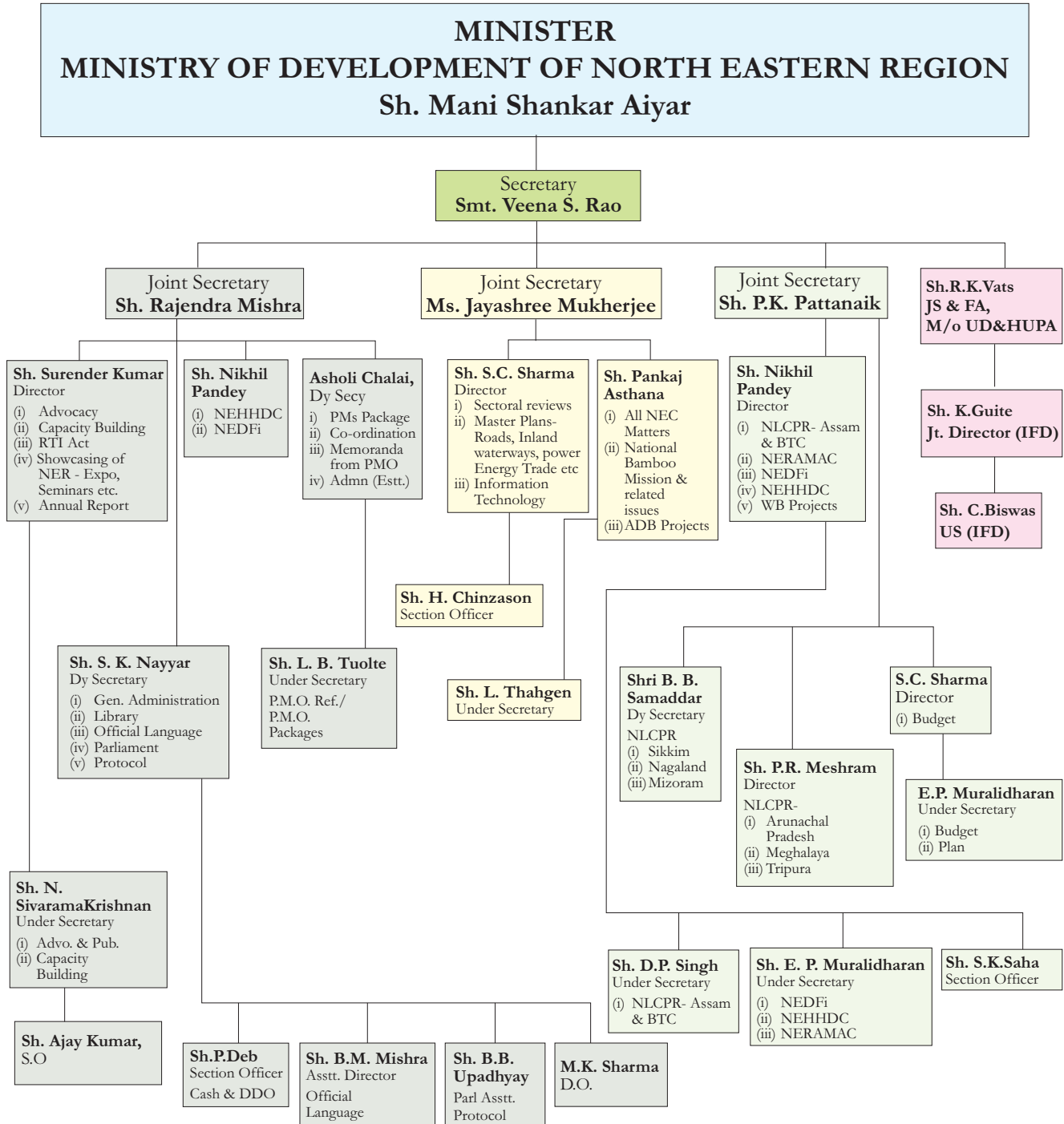


ANNEX -III



# Look Northeast policy

**A** MIDST the Incredible India@60 blitzkrieg in New York was an event that didn't attract the attention it should have. The one-day 'North East India Investment Conference' of September 26 — aimed at putting the Northeast on the international investment map — was certainly unprecedented. For the first time in 60 years, the Indian government was signalling that it was ready to showcase a region marked by insurgencies, militarisation and alienation — and which it had always kept under wraps — as an investment destination and a paradise for tourism.

Hosted by the Ministry for the Development of the North East Region (DONER) and the Confederation of Indian Industries, the



**Government initiatives to attract investments in this region should take people along**

**PAMELA PHILPOSE**

ernment is reluctant to come out strongly against the repressive junta in Myanmar to the general dismay of the international community and human rights activists.

What does this frenetic activity mean? At a national level it means that the Centre is more confident than ever before of being able to manage its northeastern periphery, despite army mobilisation and rock-

as of yesterday. But if the local people are not sufficiently involved in such projects right from their planning stage onwards, if due processes are not followed in implementing them, investment policies of this kind would only foment suspicion, resentment, even resistance, which in turn could see a greater mobilisation of security forces in the area, setting into play the familiar cycle of

guiding principle for any project in the region.

Some lessons seem to have been learnt. The words used in the 'Northeast Industrial and Investment Promotion Policy, 2007', for instance, are chosen with care. A granite mining project near Goalpara town in Assam — the state is believed to have more than a billion cubic metres of granite deposits of various kinds — makes it clear that since these deposits are located in a reserve forest area, anyone mining here would be required to follow environmental norms, fill up the affected top soil and ensure afforestation as part of the project. A proposal for a cement plant near the limestone quarries of Assam's Jorhat district, specifically

# The Telegraph

North East attracts NRI investments

North East attracts NRI investments

North East attracts NRI investments

North East attracts NRI investments

North East attracts NRI investments

Northeast goes to New York

The NRIs come



High road to prosperity

DIPLOMACY

K.P. NAYAK



...saying it...  
...we, translates as 'let us not repeat age-old mistakes'.

pamela.philpote@expressindia.com



Website:  
[www.northeast.nic.in](http://www.northeast.nic.in)  
[www.mdoner.gov.in](http://www.mdoner.gov.in)